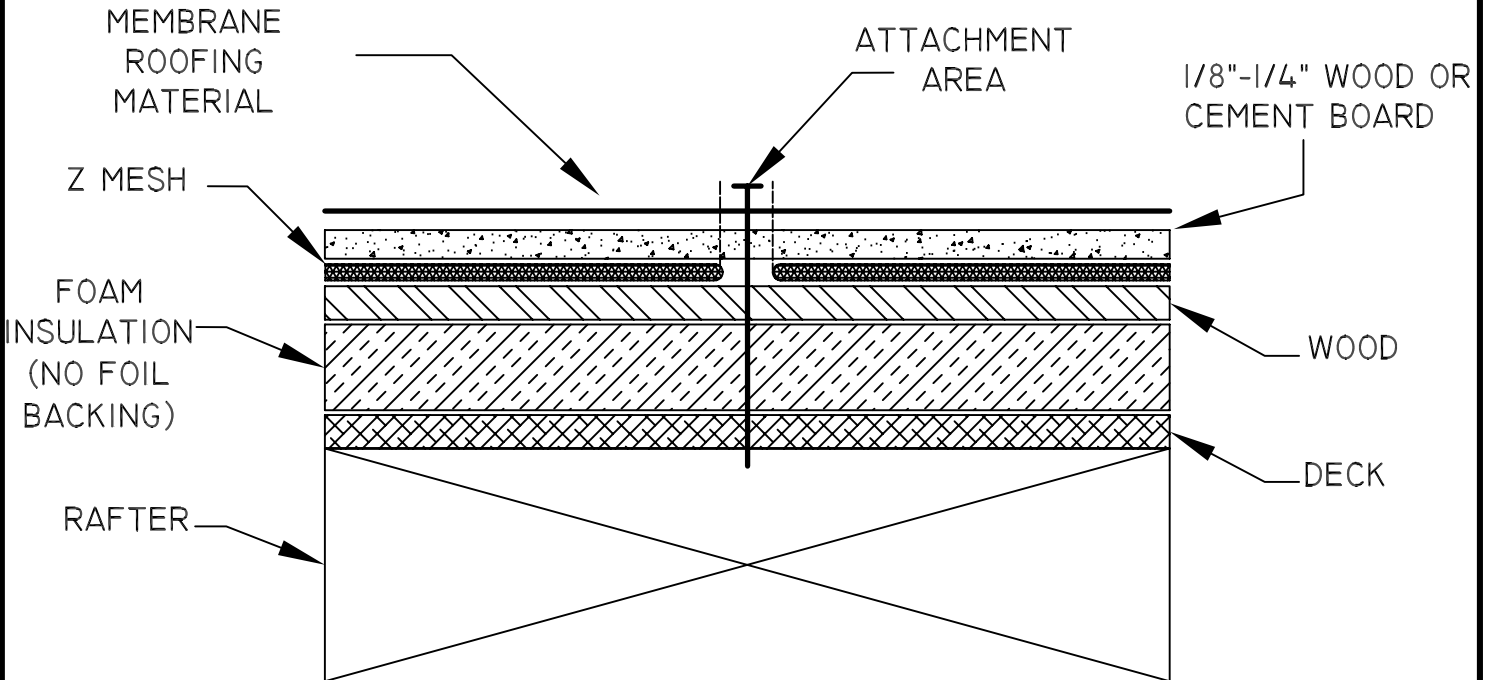


WARNING!!

DO NOT CUT OR DAMAGE Z MESH.
DO NOT ALLOW Z MESH TO COME
INTO CONTACT WITH ANY OTHER
ELECTRICALLY CONDUCTIVE
MATERIAL. DO NOT FASTEN
THROUGH ANY ELECTRICALLY
CONDUCTIVE MATERIAL AND Z
MESH SIMULTANEOUSLY.



NOTE:

Z MESH TO BE INSTALLED WITH 2 INCHES OF SPACE BETWEEN RUNS. CEMENT BOARD TO BE 1/4" THICK. Z MESH SHOULD BE WITHIN 1" OF EDGE OF ROOF. DO NOT PENETRATE Z MESH AND EDGE METAL WHEN NAILING OFF. DO NOT ALLOW MECHANICAL FASTENERS TO COME INTO CONTACT WITH Z MESH AND METAL DECK, METAL TRUSSES, OR ANY OTHER METAL.

DRAWING NO.:

RD-4

**Z MESH UNDER SINGLE
PLY MEMBRANE**

DRAWING BY:

ACI

DATE:

JUN. 2005

HEATIZON SYSTEMS

advanced floor heating/ snow and ice removal systems

4137 SOUTH 500 WEST, MURRAY, UTAH 84123 PH (801) 293-1232 FAX (801) 293-3077