

M330-50a Relay Panel

DATA SHEET

Description:

Enclosed in an attractive powder coated metal enclosure, the M330 series Heatizon Relay Panels are designed to operate up to four line voltage heating element lengths manually, from one Heatizon Activation Device, or from a Heatizon Systems Monitor Station Selector Box (Heatizon Part No. M346).

- Powder coated enclosure with wiring diagram on the inside cover. (Other enclosures are available upon request)
- Lighted rocker switches for manual operation.
- Easy connection of power supply and load for up to four circuits.

Design:



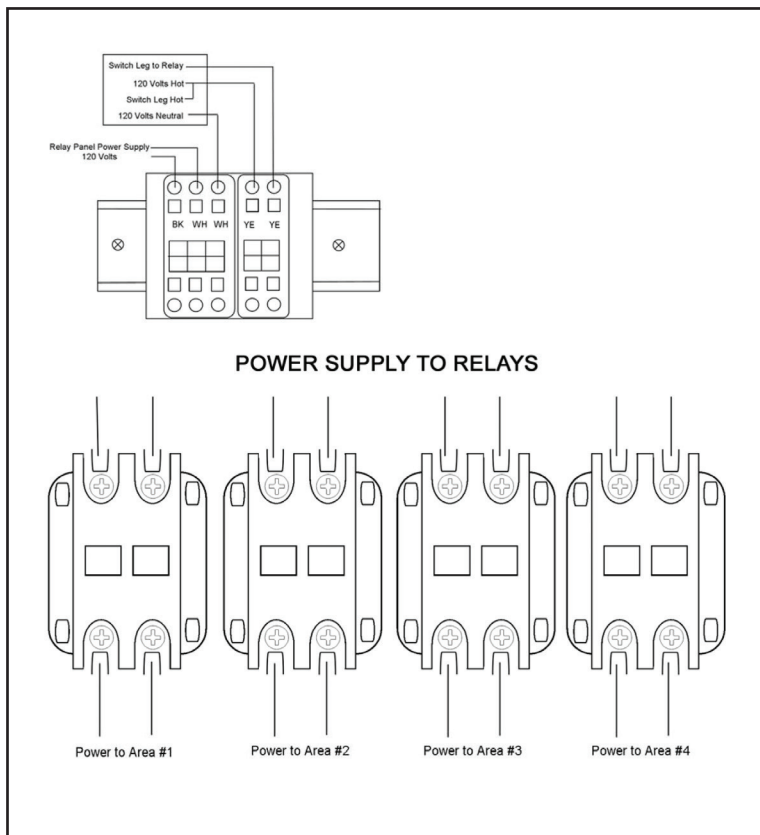
Features:

- Power On/Off switch for each circuit
- Up to four 50 Amp loads.
- Relays provide easy connection to load and power source.
- Compatible with most Heatizon supplied activation devices and Heatizon Systems'
- Selector Box (Heatizon Part No. M329 Modified).

Specifications:

- Requires 120V, Switches 120/208/240/277/480 VAC
- Dimensions: 18" x 12" x 5"
- Weight: 15 lbs

Wiring:



Applications:

- Snow Melting
- Roof Deicing
- Floor Warming
- Space Heating

Benefits:

- Allows one activation device to turn up to four lengths of cable on and off either remotely or manually.
- Can be turned on remotely or manually



Note: Refer to the NEC or CEC for specific requirements.



4137 South 500 West
Murray, Utah 84123

FOR MORE INFORMATION
Company: Heatizon Systems
Toll Free: 888-239-1232
Email: info@heatizon.com
Visit us at: www.heatizon.com