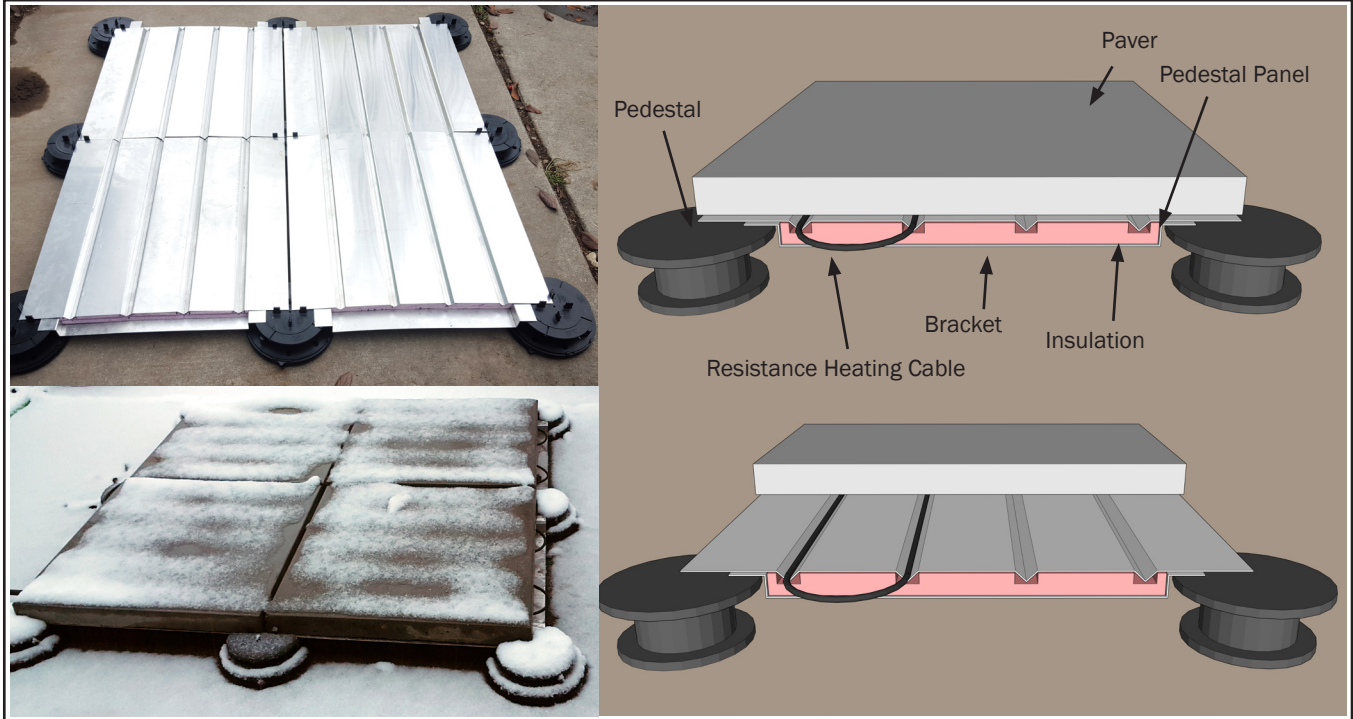


Electric Resistance Pedestal Paver Snow Melt DATA SHEET

Description:

The patented Heatizon Pedestal Paver Snow Melt system provides an effective heatsink to transfer heat from our Hott-Wire MI Cable to paver systems using pedestals on roofs, decks, bridges, ramps, platforms, or anywhere a pedestal paver system is installed. The Heatizon Pedestal Paver Snow Melt system is simple in design and allows easy integration and installation for many applications using Heatizon's high output electric heating cable, Hott-Wire.

Design:

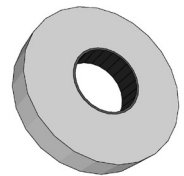


Specifications:

Length	23.5"
Width	23.5" and Custom
Profile Height	1" with insulation
Material	Aluminum/EPS Insulation
Attachment Method	Free placement

Accessories:

Every Pedestal Paver system comes with NI154 aluminum tape. The tape is to help act as an heat transfer agent and helps secure Hott-Wire to the pan in the channels.



Applications:

Roof Top Pavers	Drainage Systems
Pedestal Systems	
Green Roofs	
Hardscapes	

Features & Benefits:

Easy Installation	Versatile Applications
Customized Lengths	Easy Control Integration
Effective Heat Transfer	Customized Material
Protects Heating Cable	



4137 South 500 West
Murray, Utah 84123

FOR MORE INFORMATION
Company: Heatizon Systems
Toll Free: 888-239-1232
Email: info@heatizon.com
Visit us at: www.heatizon.com

Hott-Wire® (MI) Snow Melting & De-icing Cable

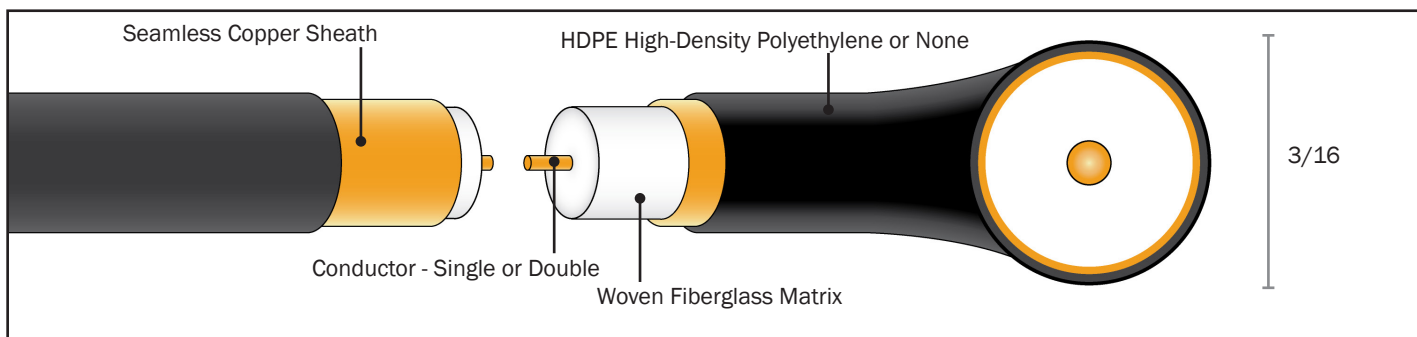
DATA SHEET

Hott-Wire® is a high quality Mineral Insulated (MI) heating cable designed as a single or dual conductor heating element woven in a fiberglass matrix compressed by a seamless copper sheath. Hott-Wire® is designed to provide an effective means of melting snow and ice with 100% efficiency. Our system is capable of delivering a wide range of heating outputs and can be custom designed for specific

projects and applications. Hott-Wire® is one of the most rugged heating cable designs available that is also specifically designed for resistance heating. Hott-Wire® can be installed in a variety of surfaces such as new pour concrete, existing concrete as a retrofit, a sand bed below pavers, stone dust, and even new pour asphalt applications. Hott-Wire® can be powered by any voltage up to 600

volts. Our cutting edge manufacturing process makes Hott-Wire® superior in strength, reliability, convenience and stability as a heating cable. With pre-attached cold leads, Hott-Wire® is designed to be easy to install in areas large and small, for a variety of applications accomodating residential, commercial, or inudustrial projects.

Design:



Conductor	Nickel Coated Copper 0.02 to 2.0 Ω /ft
Conductor Insulator	Woven Fiberglass Matrix
Grounding Sheath	Seamless Copper
Outer Jacket	(HDPE) High-Density Polyethylene or None
Minimum Bending Radius	5D (Approx. 1")
Minimum Spacing	2"
Supply Voltage	Up to 600VAC
HDPE Maximum Temperature	248°F (120°C) with HDPE Jacket
Thermal Resistance Temperature	482°F (250°C)
Output Wattage	Up to 40 watts/ft single conductor or 25 watts/ft double conductor
Warranty	10 Year Limited Warranty
Listing Agency	ETL (Intertek Testing Laboratory)

Sample Labeling Information:

Sample Label: S / 0.02 / 240V / 308ft / 7,849W

Key: (S = Single Conductor, D = Double Conductor) / (0.02 = Ohm/ft) / (240V = Voltage) / (308ft = MI Cable Length) / (7,849W = Total Wattage)

Applications:

Walkways	Entry Areas
Driveways	Helicopter Pads
Bridges	Stairs
Handicap Ramps (ADA)	Patios

Surfaces:

Concrete (New Pour)	Concrete (Retrofit Existing)
Asphalt (New Pour)	Asphalt (Retrofit Existing)
Sand Under Pavers	
Stone	



Note: Ground fault protection (30 mA trip protection) must be used when installing Hott-Wire products. Refer to the NEC or CEC for specific requirements.



4137 South 500 West
Murray, Utah 84123

FOR MORE INFORMATION
Company: Heatizon Systems
Toll Free: 888-239-1232
Email: info@heatizon.com
Visit us at: www.heatizon.com